

**Ohio
Wesleyan
Outcomes...
Five Years
Later**

**A Follow-up Study of the
Class of 1998**

Career Services

Ohio Wesleyan University

Connecting your Education to your Career Journey

Ohio Wesleyan Outcomes

Five Years Later...A Follow-up Study of the Class of 1998
September, 2003

This summer, in addition to our usual one year outcomes survey, Career Services conducted a survey to study the career journeys of Ohio Wesleyan graduates five years after they graduated. This study was primarily motivated by a desire to gain a clearer picture of our Ohio Wesleyan graduates' paths, as five years allows us a better understanding of their employment and graduate school pursuits. Questionnaires were given to Ohio Wesleyan University Class of 1998 graduates approximately five years after their graduation. Graduates who attended their 5 year reunion were given the survey at their class dinner. After this initial connection with the class, graduates were e-mailed a link to the survey or, if an e-mail address was not available, mailed a paper copy of the survey with a postage-paid return envelope and instructions about the option of filling out the survey on-line. For those who did not respond to this original communication, individuals who were originally e-mailed were sent a follow-up e-mail reminder, and then a paper copy of the survey was sent to them. If graduates did not respond to the paper mailing of the survey, they were sent a postcard reminder. These communications yielded a return rate of 51% of the Class of 1998.

This report covers the following areas for the Class of 1998:

- *Summary Statistics*
- *Employment Information*
- *Graduate School Information*

The current status of the Class of 1998 is as follows:

74% are currently employed 15% are enrolled in graduate school 9% are enrolled in graduate school and employed 2% were involved in other endeavors at the time of the survey

Approximately 52% of the respondents from the Class of 1998 have earned (or are currently seeking) an advanced degree. For further detail, this report includes lists of employment by major and type, as well as graduate school information by major and area of study.

We hope this report will serve as a reference guide for all faculty, staff, students, parents, and alumni interested in career-related statistics for Ohio Wesleyan graduates. If you have any questions or desire additional statistics about the Class of 1998, please contact Career Services at (740) 368-3152. While personally identifiable information is confidential, we are able to sort information by any field listed within the questionnaire. We hope you find the results of this survey interesting and informative.

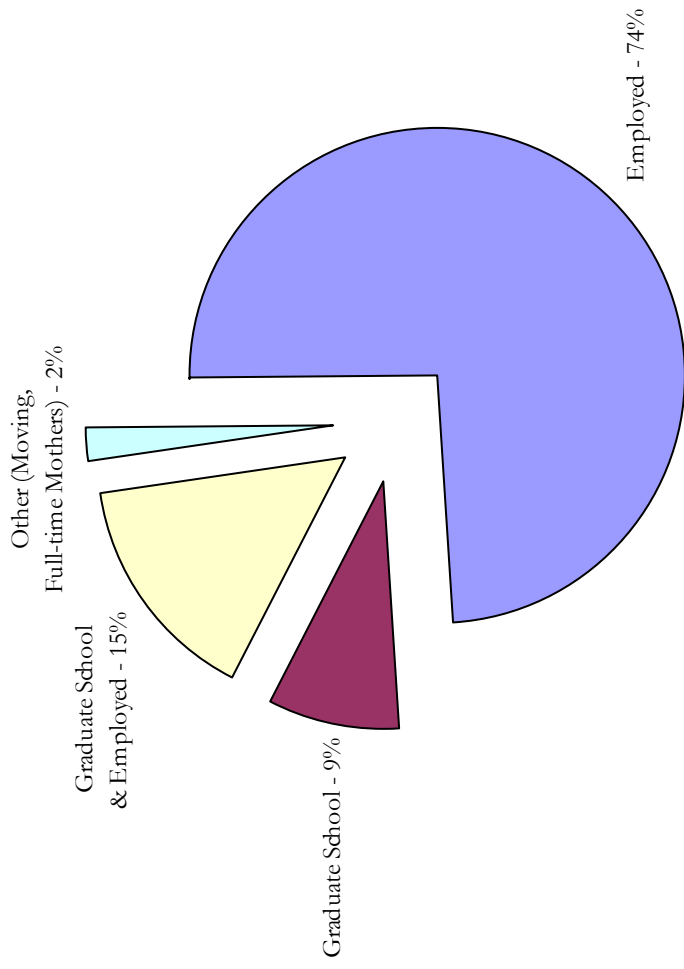
Sincerely,

Carrie A. Lippert
Director of Career Services

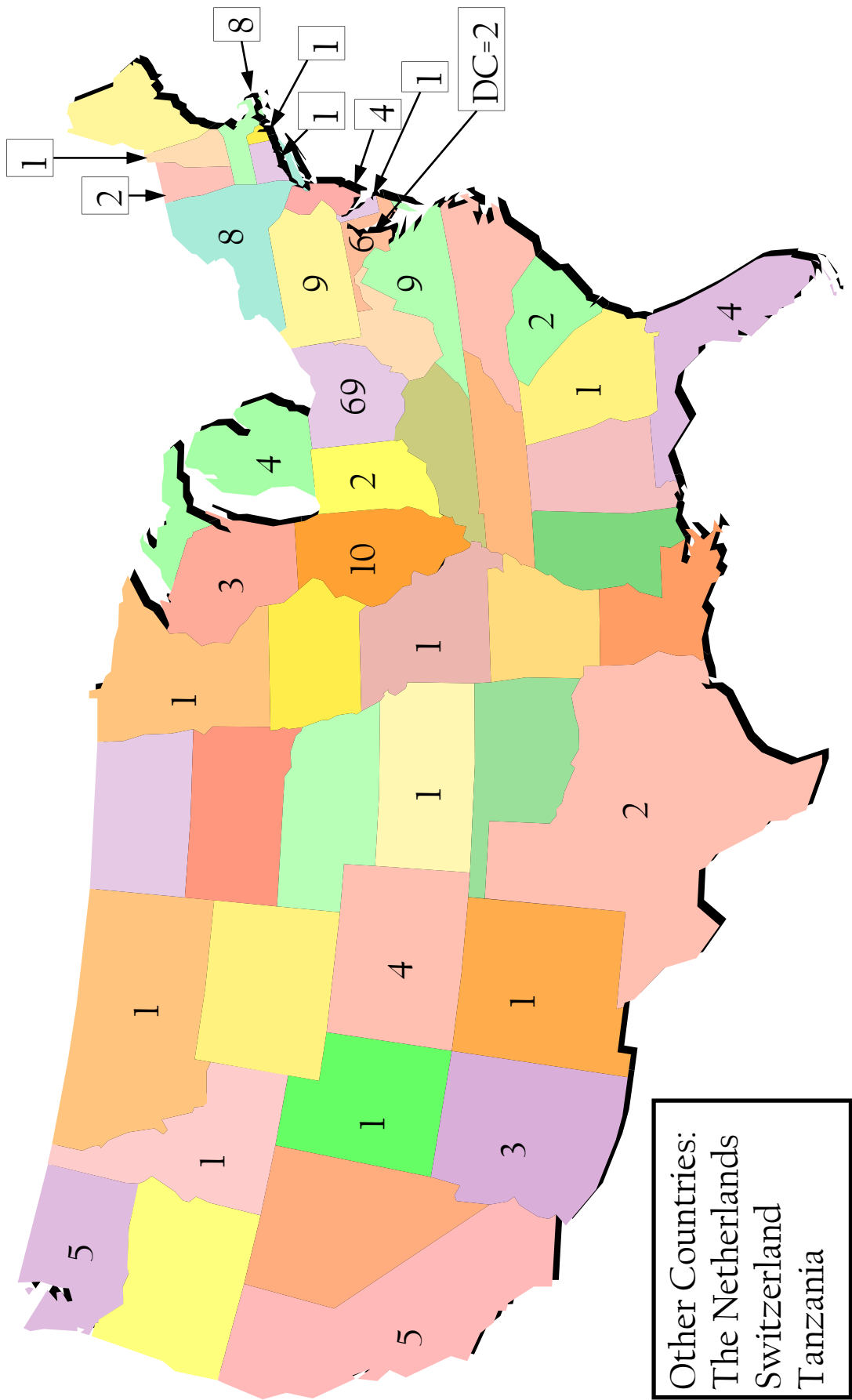
Nancy A. Westfield
Asst. Director of Career Services

SUMMARY STATISTICS OF THE CLASS OF 1998

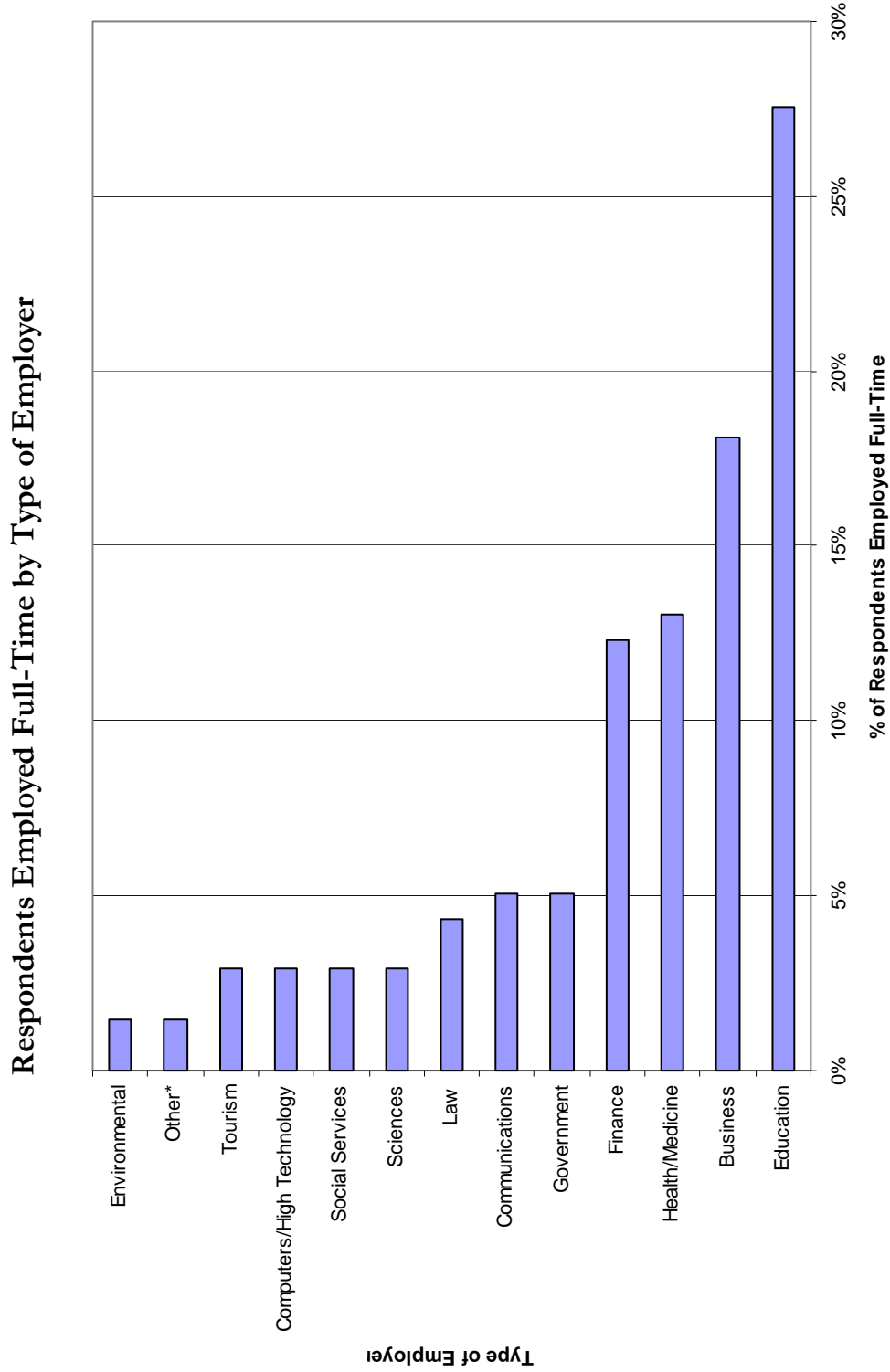
CURRENT STATUS: CLASS OF 1998



LOCATION OF CLASS OF 1998 RESPONDENTS

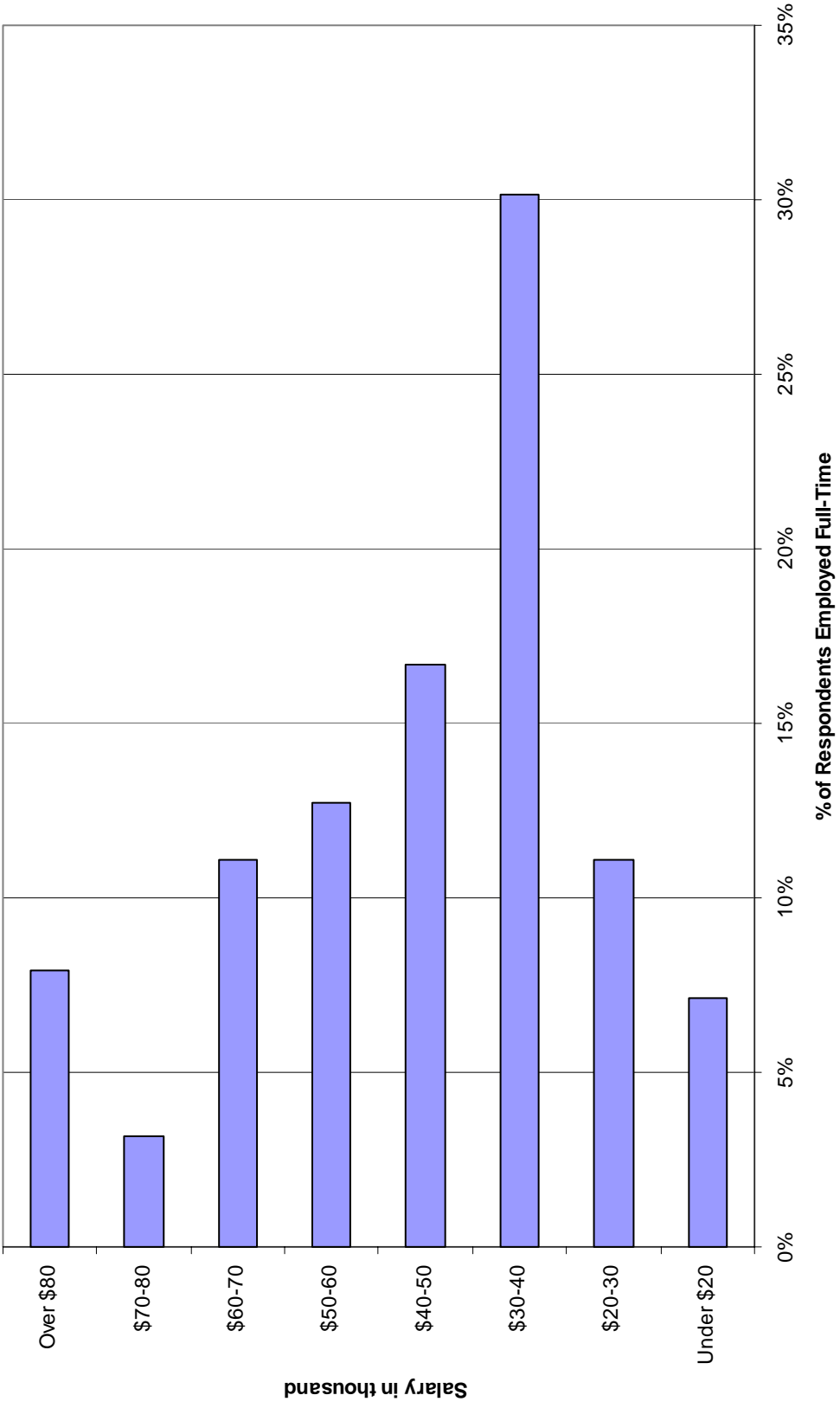


STUDY OF THE CLASS OF 1998 GRADUATES EMPLOYED FULL-TIME



*Employment Areas included in "Other" category: Museum, Political Fundraising

Salaries - Full-Time Employment



FULL-TIME EMPLOYMENT BY MAJOR (CROSS-REFERENCED)

<u>Major(s)</u>	<u>Name of Employing Organization</u>	<u>Job Title</u>
Accounting	Deloitte & Touche LLP	Senior Accountant - Auditor
	Ernst & Young	Auditor/Accountant
	Safelite Glass Corporation	Senior Accountant
	USA Today	District Sales Manager
Accounting, German	Cognos Corporation	Senior Consultant
	McMaster-Carr Supply Company	Manager of Order Entry
Accounting, Philosophy	Kimberly-Clark Corporation	Product Development/Materials Specialist
	Sparrow Hospital	Family Practice Resident - 2nd Year
Biochemistry	DePaul University	Consultant
	Ohio State University/Children's Hospital	Internal Medicine/Pediatrics Residency
Botany-Microbiology	City of Chandler	Water Conservation Coordinator
	Beth Israel Deaconess Medical Center	Postdoctoral Fellow
Botany-Microbiology, Environmental Studies	Ross Environmental Services	Chemist
	University Hospitals of Cleveland	Resident Physician - Neurosurgery
Botany-Microbiology, Zoology	University of South Carolina	Research Associate
	University of Utah, Department of Chemistry	Research Assistant
Chemistry	University of Wisconsin Hospitals and Clinics	Pediatrics Resident Doctor
	Chemical Abstracts Service	Senior Market Development Representative
Chemistry, Environmental Studies	Mayo Graduate School of Medicine	Physician Resident, Dept. of Anesthesiology
	Prometric	Software Engineer
Chemistry, Philosophy	Tanzania Revenue Authority	Business Analyst
	Boston Capital Services, Inc.	Sales Desk Manager
Computer Science	Liberty Mutual Insurance Group	Senior Underwriter
	Siemens Energy & Automations	Senior Materials/Logistics Specialist
Computer Science, Economics	Tanzania Revenue Authority	Business Analyst
	Washington Mutual Bank	Communications Project Analyst
Economics	Morgan Stanley	Associate
	NPower NY	Community Relations Associate
Economics, Computer Science	University of Illinois at Urbana-Champaign	Graduate Assistant
	CRM Learning	Supervising Producer
Economics, Geology	Ameritrade Holding Co.	Sales Manager - Northeast
	CB Richard Ellis	Senior Associate
Economics, German	Charter One Bank, NA.	Supervisor - Business Banking Risk & Reporting
	Eaton/Cutler-Hammer	HR Analyst
Economics, Politics and Government	Enterprise Rent-A-Car	Area Manager
	Farmers Citizen Bank	Vice President - Retail Banking
Economics, Psychology	JCB Properties, Inc.	Vice President/Treasurer
	Lakeshore Staffing	Director of Staffing
Economics, Sociology/Anthropology	Limited, Inc.	Assistant Buyer
	National City Bank	Assistant Vice President

FULL-TIME EMPLOYMENT BY MAJOR (CROSS-REFERENCED)

<u>Major(s)</u>	<u>Name of Employing Organization</u>	<u>Job Title</u>
Geography, Fine Arts Geography, Geology	Sigma Alpha Epsilon Fraternity and Foundation	Regional Manager
	American Tower Corporation	Project Manager
Geography, Urban Studies Geology, Economics Geology, Geography	Eastern Mountain Sports	Assistant Store Manager
	McNees Wallace and Nurick LLC	Library Assistant
	Kohl's Department Stores Headquarters	Media Analyst
German, Accounting German, Economics German, Genetics German, International Studies History	Washington Mutual Bank	Communications Project Analyst
	Eastern Mountain Sports	Assistant Store Manager
	McNees Wallace and Nurick LLC	Library Assistant
	Cognos Corporation	Senior Consultant
Humanities-Classics International Business International Business, Sociology/Anthropology International Studies, German International Studies, Spanish Journalism	Morgan Stanley	Associate
	University of Florida	Graduate Assistant
	PUCO	Customer Service Investigator
	American Political Science Association	Assistant Editor
	Baker & Hostetler LLP	Law Associate
	Mt. Healthy City School District	Social Studies Teacher & Head Football Coach
	Norwalk City Schools	Middle School Assistant Principal and Athletic Director
	The Graham School	Teacher
	Vorys, Sater, Seymour, and Pease	Tech Support Analyst
	AXA Advisors, LLC	Financial Consultant
Journalism, Psychology Mathematics Mathematics, French Music Education Music Performance	The Huntington Investment Company	Investment Officer
	GarantiBank International	Relationship Manager
	PUCO	Customer Service Investigator
	Siemens Energy & Automation	International Marketing Specialist
	Associated Press	Direct Radio Executive
	Clear Channel Entertainment	Director of Sales & Marketing
	Corry Publishing	Managing Editor and Production Supervisor
	MBNA America	Account Manager
	Washington Mutual Bank	Technical Project Manager
	Pickerington Local School District	Mathematics Teacher (7th/8th Grades)
Music Performance, English Music Performance, Philosophy Philosophy, Accounting Philosophy, Chemistry Philosophy, Music Performance Philosophy, Pre-Law	West Side Montessori Center	Pre-primary Teacher (Ages 3-6)
	Shaw University	Assistant Band Director/Upper Brass Instruction
	International Mission Board, Southern Baptist Conv	Missionary Apprentice
	Paychex	Client Service Manager
	The Wellington School	Choral Director
	PricewaterhouseCoopers LLP	Human Resources Assistant
	Arnold & Porter	Law Associate
	McMaster-Carr Supply Company	Manager of Order Entry
	Mayo Graduate School of Medicine	Physician Resident, Dept. of Anesthesiology
	Arnold & Porter	Law Associate
United States Court of Appeals for the Sixth Circuit	Judicial Clerk	

FULL-TIME EMPLOYMENT BY MAJOR (CROSS-REFERENCED)

<u>Major(s)</u>	<u>Name of Employing Organization</u>	<u>Job Title</u>
Physical Education	Lynchburg Parks & Recreation	Senior Recreation Specialist
Physical Education, Pre-Physical Therapy	The Ohio State University	Program Assistant - Prior Health Sciences Library
Physical Education, Psychology	Texas Childrens Hospital	Physical Therapist
Physical Education, Sociology/Anthropology	Pivot Insurance	Case Manager
Politics and Government	American Cancer Society	Community Development Director
	Joe Lieberman for President, Inc.	Midwest Regional Finance Director
	Mello & Klesch, LLP	Attorney
	Ohio House of Representatives	Legislative Aide
Politics and Government, Economics	NPower NY	Community Relations Associate
Politics and Government, Psychology	EaglePicher Technologies	Attorney
Politics and Government, Women's Studies	Gould Fiber Optics	Human Resources Manager
	Reynolds & Reynolds	Account Manager/Sales
Pre-Law, Philosophy	United States Court of Appeals for the Sixth Circuit	Judicial Clerk
Pre-Medicine, Spanish	St. Vincents Mercy Memorial Hospital	Medical Intern (Physician)
Pre-Medicine, Zoology	Henry Ford Hospital	Resident Physician
	University of Florida	Graduate Student Assistant
Pre-Physical Therapy, Physical Education	Texas Childrens Hospital	Physical Therapist
Psychology	Butterfly Garden Early Learning Center	Program Supervisor
	Cysanyi & Joyce Educational Services	School Psychologist
	Four Seasons Hotels & Resorts	Corporate Sales Coordinator
	Gibraltar Laboratories	Lab Tech
	Grey W. Jones Co., LLC	Associate Attorney
	Hasbro, Inc.	POD Coordinator
Psychology, Economics	University of Illinois at Urbana-Champaign	Graduate Assistant
Psychology, Economics Management	Ohio Wesleyan University	Assistant Director of Major Gifts
Psychology, Journalism	Washington Mutual Bank	Technical Project Manager
Psychology, Physical Education	Pivot Insurance	Case Manager
Psychology, Politics and Government	EaglePicher Technologies	Attorney
Psychology, Zoology	Alliance Care	Physical Therapist
Religion	American Express Financial Advisors, Inc.	Paraplanner
	Nationwide Financial	Annuity Manager
Sociology/Anthropology	Applied Career Training	Admissions Counselor
	Bank of New York	Trader
	Franklin & Marshall College	Associate Director of Residential Programs
	University of Colorado Hospital	Registered Nurse, Pulmonary Medicine
	University of Montana	Administrative Assistant II
Sociology/Anthropology, Economics	CRM Learning	Supervising Producer
Sociology/Anthropology, International Business	GarantiBank International	Relationship Manager
Sociology/Anthropology, Physical Education	American Cancer Society	Community Development Director
Sociology/Anthropology, Women's Studies	Young Families of Children Inc.	Family Support Worker

**FULL-TIME EMPLOYMENT BY MAJOR
(CROSS-REFERENCED)**

<u>Major(s)</u>	<u>Name of Employing Organization</u>	<u>Job Title</u>
Spanish, International Studies	Siemens Energy & Automation	International Marketing Specialist
Spanish, Pre-Medicine	St. Vincents Mercy Memorial Hospital	Medical Intern (Physician)
Spanish, Zoology	Cornell University	Asst. Dir. Of Admissions & Asst. Coord. Of Multicultural Recruitment
Theatre	California Pizza Kitchen	Server
Theatre (continued)	Princess Cruise Lines	Performer
	Strongsville City Schools	French Teacher
Urban Studies, Geography	Kohl's Department Stores Headquarters	Media Analyst
Women's Studies, Politics and Government	Gould Fiber Optics	Human Resources Manager
	Reynolds & Reynolds	Account Manager/Sales
Women's Studies, Sociology/Anthropology	Young Families of Children Inc.	Family Support Worker
Zoology	Cold Spring Harbor Laboratory	Graduate Student Assistant
	Cross County Veterinary Service	Veterinarian
	McGraw-Hill Companies	Project Editor
	Primary Vision Care	Optometrist
	University of Michigan Hospital	Anesthesiology Resident
Zoology, Botany-Microbiology	University of Pittsburgh Medical Center	Emergency Medicine Resident
Zoology, Environmental Studies	Beth Israel Deaconess Medical Center	Postdoctoral Fellow
Zoology, Pre-Medicine	Franklin County Metro Parks	Hub-Naturalist
	Henry Ford Hospital	Resident Physician
Zoology, Psychology	University of Florida	Graduate Student Assistant
Zoology, Spanish	Alliance Care	Physical Therapist
	Cornell University	Asst. Dir. Of Admissions & Asst. Coord. of Multicultural Recruitment

FULL-TIME EMPLOYMENT BY EMPLOYER TYPE

<u>Type of Employer</u>	<u>Name of Employing Organization</u>	<u>Job Title</u>
Business	American Tower Corporation	Project Manager
	EaglePicher Technologies	Attorney
	Eastern Mountain Sports	Assistant Store Manager
	Enterprise Rent-A-Car	Area Manager
	GE Power Systems - Automation and Network Services	Technical Support Engineer
	Hasbro, Inc.	POD Coordinator
	JCB Properties, Inc.	Vice President/Treasurer
	Kimberly-Clark Corporation	Product Development/Materials Specialist
	Kohl's Department Stores Headquarters	Media Analyst
	Lakeshore Staffing	Director of Staffing
	Liberty Mutual Insurance Group Limited, Inc.	Senior Underwriter
	McMaster-Carr Supply Company	Assistant Buyer
	Nationwide Financial	Manager of Order Entry
	Paychex	Annuity Manager
	Pivot Insurance	Client Service Manager
	PricewaterhouseCoopers LLP	Case Manager
	Reynolds & Reynolds	Human Resources Assistant
	Safelite Glass Corporation	Account Manager/Sales
	Self Employed	Senior Accountant
	Sheakley Uniservice, Inc.	Self Employed
	Siemens Energy & Automation	Unemployment Insurance Consultant
	Siemens Energy & Automation	International Marketing Specialist
	State Farm Insurance - Denise Beam Agency	Senior Materials/Logistics Specialist
The Scotts Company	Licensed Agent Staff	
Communications	Associated Press	Assistant Brand Manager
	Clear Channel Entertainment	Direct Radio Executive
	Corry Publishing	Director of Sales & Marketing
	Horse & Rider/Primedia, Inc.	Managing Editor and Production Supervisor
	Qwest Communications International	Assistant Editor
	The Food Group	Senior Engineer
	USA Today	Art Director/Digital Designer
	Cognos Corporation	District Sales Manager
	Eaton/Cutler-Hammer	Senior Consultant
	Gould Fiber Optics	Human Resources Analyst
Computers/High Technology	NPower NY	Human Resources Manager
	Applied Career Training	Community Relations Associate
	Butler Area School District	Admissions Counselor
		First Grade Teacher
Education		

FULL-TIME EMPLOYMENT BY EMPLOYER TYPE

<u>Type of Employer</u>	<u>Name of Employing Organization</u>	<u>Job Title</u>
Education (continued)	Cardington Lincoln High School	English Teacher
	Carmel/Clay Schools	Teacher
	Charles County Public Schools	Art Teacher K-5
	Chartiers Valley High School/Self-Employed	Track & Field Coach/Potter
	Columbus Public Schools	Teacher
	Cornell University	Asst. Dir. Of Admissions & Asst. Coord. Of Multicultural Recruitment
	CRM Learning	Supervising Producer
	Cysanyi & Joyce Educational Services	School Psychologist
	DePaul University	Consultant
	Elysian Charter School	Art Teacher
Environmental	Franklin & Marshall College	Associate Director of Residential Programs
	Harvard University	Major Gifts
	McGraw-Hill Companies	Project Editor
	Mt. Healthy City School District	Social Studies Teacher & Head Football Coach
	North Canton City Schools	8th Grade English Teacher
	Norwalk City Schools	Middle School Assistant Principal and Athletic Director
	Ohio Wesleyan University	Assistant Director of Major Gifts
	Ohio Wesleyan University	Assistant Director of Student Activities for Greek Life
	Olentangy Local Schools	Second Grade Teacher
	Pickerington Local School District	Mathematics Teacher (7th/8th Grades)
Environmental	Pickerington Local School District	Teacher
	Prometric	Software Engineer
	Shaw University	Assistant Band Director/Upper Brass Instruction
	Sigma Alpha Epsilon Fraternity and Foundation	Regional Manager
	Strongsville City Schools	French Teacher
	The Graham School	Teacher
	The Ohio State University	Program Assistant - Prior Health Sciences Library
	The Wellington School	Choral Director
	University of Florida	Graduate Student Assistant
	University of Illinois at Urbana-Champaign	Graduate Assistant
Environmental	University of Montana	Administrative Assistant II
	University of South Carolina	Research Associate
	University of Utah, Department of Chemistry	Research Assistant
	Vernon Board of Education/Maple Street School	Grade One Classroom Teacher
	Waverly City Schools	4th Grade Teacher
	West Side Montessori Center	Pre-primary Teacher (Ages 3-6)
	Franklin County Metro Parks	Hub-Naturalist
	Ross Environmental Services	Chemist

FULL-TIME EMPLOYMENT BY EMPLOYER TYPE

Type of Employer

Finance

Name of Employing Organization

American Express Financial Advisors, Inc.
 Ameritrade Holding Co.
 AXA Advisors, LLC
 Bank of New York
 Boston Capital Services, Inc.
 CB Richard Ellis
 Charter One Bank
 Deloitte & Touche LLP
 Ernst & Young
 Farmers Citizen Bank
 GarantiBank International
 MBNA America
 Morgan Stanley
 National City Bank
 The Huntington Investment Company
 Washington Mutual Bank
 Washington Mutual Bank
 City of Chandler
 Lynchburg Parks & Recreation
 Ohio House of Representatives
 PUCO
 Tanzania Revenue Authority
 U.S. Navy
 United States Court of Appeals for the Sixth Circuit
 Alliance Care
 American Cancer Society
 Beth Israel Deaconess Medical Center
 Cross County Veterinary Service
 Henry Ford Hospital
 Mayo Graduate School of Medicine
 The Ohio State University, Children's Hospital
 The Ohio State University, Dept. of Pathology
 Primary Vision Care
 Sparrow Hospital
 St. Vincents Mercy Memorial Hospital
 Texas Childrens Hospital
 University Hospitals of Cleveland
 University of Colorado Hospital

Job Title

Paraplanner
 Sales Manager - Northeast
 Financial Consultant
 Trader
 Sales Desk Manager
 Senior Associate
 Supervisor - Business Banking Risk & Reporting
 Senior Accountant - Auditor
 Auditor/Accountant
 Vice President - Retail Banking
 Relationship Manager
 Account Manager
 Associate
 Assistant Vice President
 Investment Officer
 Communications Project Analyst
 Technical Project Manager
 Water Conservation Coordinator
 Senior Recreation Specialist
 Legislative Aide
 Customer Service Investigator
 Business Analyst
 Officer/Aviator
 Judicial Clerk
 Physical Therapist
 Community Development Director
 Postdoctoral Fellow
 Veterinarian
 Resident Physician
 Physician Resident, Dept. of Anesthesiology
 Internal Medicine/Pediatrics Residency
 Graduate Research Assistant
 Optometrist
 Family Practice Resident - 2nd Year
 Physician Intern
 Physical Therapist
 Resident Physician - Neurosurgery
 Registered Nurse, Pulmonary Medicine

Government

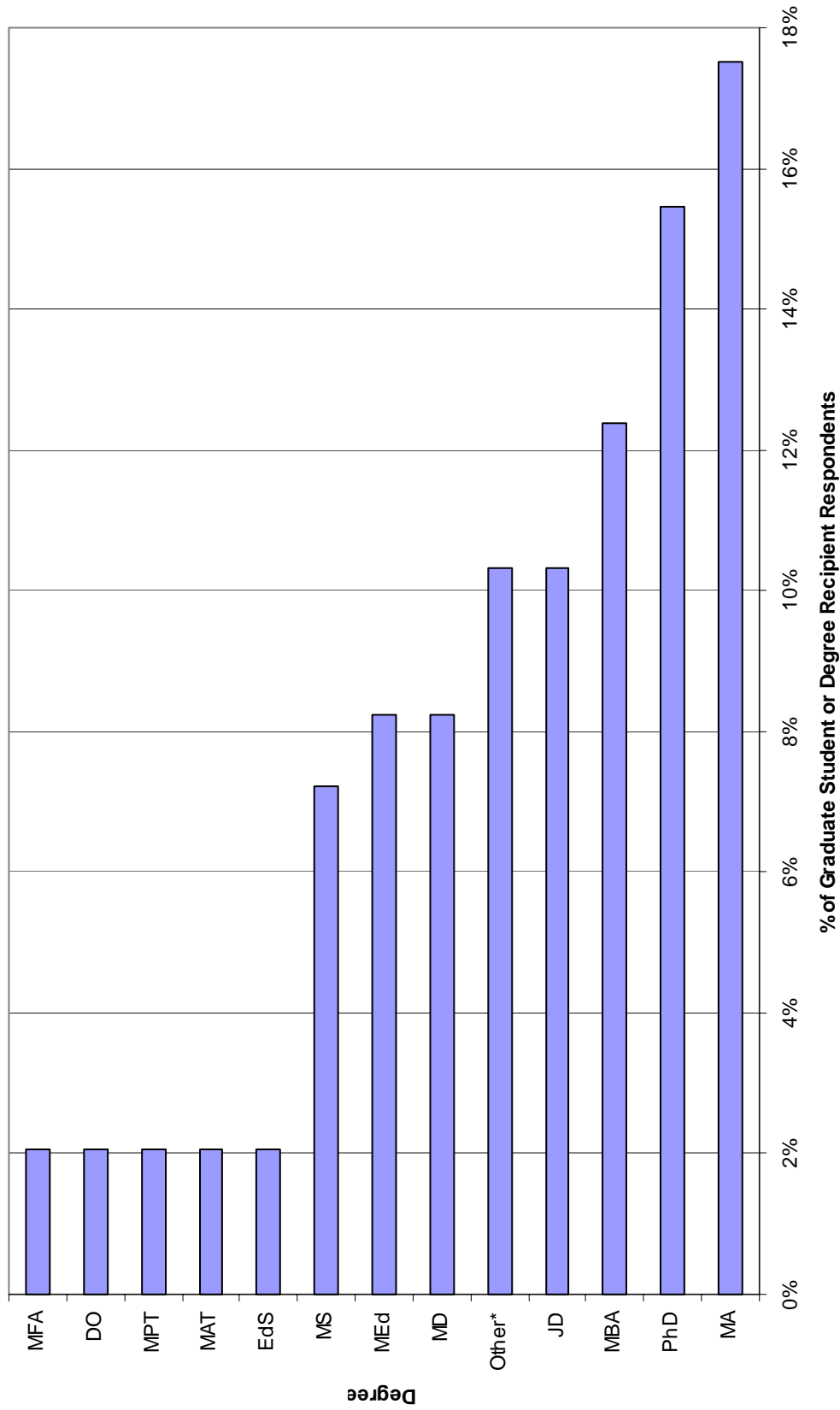
Health/Medicine

FULL-TIME EMPLOYMENT BY EMPLOYER TYPE

<u>Type of Employer</u>	<u>Name of Employing Organization</u>	<u>Job Title</u>
	University of Florida	Graduate Assistant
	University of Michigan Hospital	Anesthesiology Resident
	University of Pittsburgh Medical Center	Emergency Medicine Resident
	University of Wisconsin Hospitals and Clinics	Pediatrics Resident Doctor
Law	Arnold & Porter	Law Associate
	Baker & Hostetler LLP	Law Associate
	Grey W. Jones Co., LLC	Associate Attorney
	McNees Wallace and Nurick LLC	Library Assistant
	Mello & Klesch, LLP	Attorney
	Vorys, Sater, Seymour, and Pease	Tech Support Analyst
Law (continued)	Rock & Roll Hall of Fame and Museum	Communications Coordinator
Other, Museum	Joe Lieberman for President, Inc.	Midwest Regional Finance Director
Other, Political Fundraising	Chemical Abstracts Service	Senior Market Development Representative
Sciences	Cold Spring Harbor Laboratory	Graduate Student Assistant
	Gibraltar Laboratories	Lab Tech
	Science Application International Corporation (SAIC)	Project Control Analyst
Social Services	American Political Science Association	Assistant Editor
	Butterfly Garden Early Learning Center	Program Supervisor
	International Mission Board, Southern Baptist Convention	Missionary Apprentice
	Young Families of Children Inc.	Family Support Worker
Tourism	California Pizza Kitchen	Server
	Four Seasons Hotels & Resorts	Corporate Sales Coordinator
	Peninsula Chicago LLC	Human Resources Manager/Paymaster
	Princess Cruise Lines	Performer

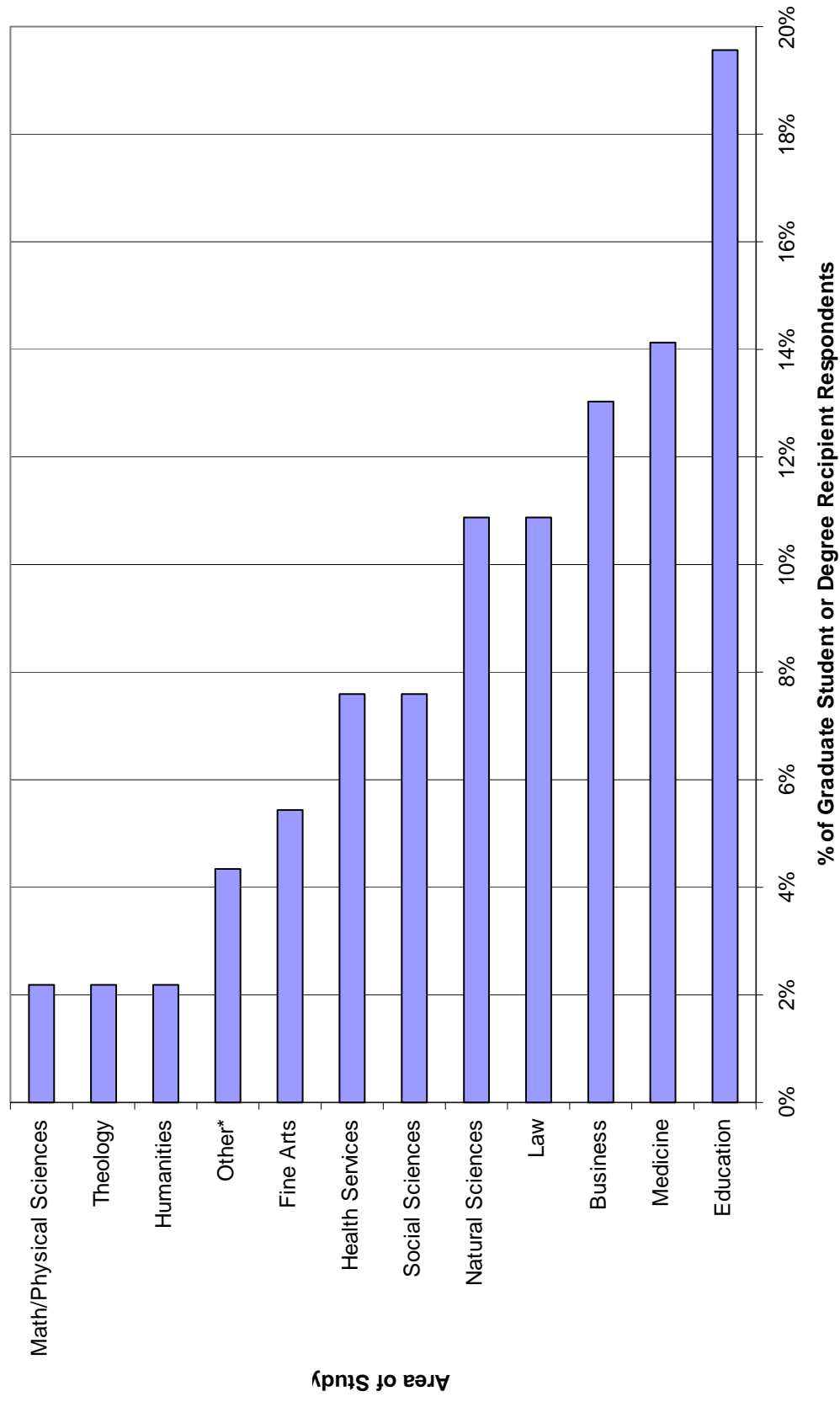
STUDY OF THE CLASS OF 1998 GRADUATE SCHOOL INFORMATION

Degrees Sought in Graduate Studies



*Degrees of study included in "Other" category: AOS, ASN, DVM, Doctor of Oriental Medicine, MDiv, MM, MMEd, MPH, OD, Teaching Credentials
 **Note that 5 graduates had obtained or were obtaining a second degree during the Summer of 2003 and both degrees are represented in this chart.

Areas of Graduate Study



*Areas of study included in "Other" category: Computer Science, Culinary Arts, Journalism, Women's Studies

GRADUATE SCHOOL BY MAJOR (CROSS-REFERENCED)

Major(s)	Graduate School	Program
Biochemistry	Ohio University	Osteopathic Medicine
	Unveristy of Wisconsin - Madison	Organic Chemistry & Business
	California State University - Long Beach	Teaching Credentials
Biology	University of Vermont	Natural Resource Planning
Biology, Environmental Studies	Ohio State University	Medicine
Botany-Microbiology	University of Virginia	Business
	Washington University	Genetics
	University of Cincinnati	Pathobiology and Molecular Medicine
Botany-Microbiology, Zoology	Case Western Reserve University	Medicine
Chemistry	University of South Carolina	Chemistry
	University of Utah	Physical/Analytical Chemistry
	Washington University in St. Louis	Medicine
	Capital University	Business
Chemistry, Environmental Studies	Mayo Medical School	Medicine
Chemistry, Philosophy	University of Vermont	Medicine
Chemistry, Pre-Medicine	Rice University	Computer Science
Computer Science, Economics	Rice University	Computer Science
Economics, Computer Science	University of Illinois, Urbana-Champaign	Psychology
Economics, Psychology	Ashland University	Business Administration
Economics Management	Case Western Reserve University - Weatherhead School of Management	Business
	Case Western Reserve University - Weatherhead School of Management	Business
	Case Western Reserve University - Weatherhead School of Management	Business
	George Washington University	Business
	George Washington University	Business and Public Management
	International Institute of Chinese Medicine	Oriental Medicine
	Otterbein College	Marketing
	Eastern Connecticut State University	Reading/Language Arts
Education	Ohio University	Rural Principalship Preparatory Program
	Sacred Heart University	Education
	University of Dayton	Educational Leadership
	Ashland University	Education
	Marygrove College	Teaching
	Ohio University	Journalism
	Otterbein College	Education
	Bowling Green State University/Boston University	French Language and Literature
English, French	University of Cincinnati/University of Maryland	Women's Studies
English, Women's Studies	University of Vermont	Natural Resource Planning
Environmental Studies, Biology	Capital University	Business
Environmental Studies, Chemistry	Miami University	Geography
Environmental Studies, Geography	Ohio University	Geographic Studies
	University of Findlay	Environmental Management Health & Safety

GRADUATE SCHOOL BY MAJOR (CROSS-REFERENCED)

Major(s)	Graduate School	Program
Environmental Studies, Physics	The Ohio State University	Environmental Graduate Studies Program
Fine Arts	Scottsdale Culinary Institute	Le Cordon Bleu Culinary Arts
Fine Arts (continued)	The School of the Art Institute of Chicago	Visual Communications
Fine Arts, Geography	University of Connecticut	Geography
French, English	Bowling Green State University/Boston University	French Language and Literature
French, Mathematics	Siena Heights University	Early Childhood Education w/ Montessori Concentration
Genetics	The Ohio State University	Pathobiology
Genetics, German	University of Florida	Biomedical Sciences
Geography, Environmental Studies	Miami University	Geography
	Ohio University	Geographic Studies
	University of Connecticut	Geography
Geography, Fine Arts	University of Findlay	Environmental Management Health & Safety
Geology, Environmental Studies	University of Florida	Biomedical Sciences
German, Genetics	Ashland University	Education
History	Case Western Reserve University	Law
	University of Pittsburgh	Master of Arts in Teaching
	University of Toledo	Educational Administration and Supervision
International Business, International Studies	Johns Hopkins University	Public Health
International Business, Sociology/Anthropology	Bentley College	Business
International Studies, International Business	Johns Hopkins University	Public Health
International Studies, Spanish	Georgia State University	International Business
Journalism	Lesley University	Elementary Education
Mathematics	Mary Grove College	Education
Mathematics, French	Siena Heights University	Early Childhood Education w/ Montessori Concentration
Music Education	Norfolk State University	Trumpet Performance
Music Performance	Golden Gate Baptist Theological Seminary	Christian Education
	The Ohio State University	Music Education
Music Performance, Philosophy	Harvard University	Law
Philosophy	University of South Florida	Philosophy
Philosophy, Chemistry	Mayo Medical School	Medicine
Philosophy, Music Performance	Harvard University	Law
Philosophy, Pre-Law	Yale University	Law
Physical Education	Springfield College	Athletic Administration/Physical Education
Physical Education, Pre-Physical Therapy	St. Ambrose University	Physical Therapy
Physics, Environmental Studies	The Ohio State University	Environmental Graduate Studies Program
Politics and Government	Boston College	Law
	University of Akron	Law
	University of California - Berkeley	Law
	University of Maine	Law
	University of Cincinnati	Law
	University of Maryland	Law
Politics and Government, Psychology		Management Sciences
Politics and Government, Women's Studies		

GRADUATE SCHOOL BY MAJOR (CROSS-REFERENCED)

<u>Major(s)</u>	<u>Graduate School</u>	<u>Program</u>
Pre-Law, Philosophy	Yale University	Law
Pre-Medicine, Chemistry	University of Vermont	Medicine
Pre-Medicine, Spanish	Ohio University	Osteopathic Medicine
Pre-Medicine, Zoology	Medical College of Ohio	Medicine
Pre-Medicine, Zoology	University of Florida	Biomedical Research
Pre-Physical Therapy, Physical Education	St. Ambrose University	Physical Therapy
Psychology	Capital University	Law
	Kent State University	School Psychology
	University of Pittsburgh	Education - Child Development
	University of Illinois, Urbana-Champaign	Psychology
	University of Cincinnati	Law
Psychology, Economics	The Pennsylvania State University	Child Clinical Psychology
Psychology, Politics and Government	Temple University	Physical Therapy
Psychology, Sociology/Anthropology	Princeton Theological Seminary	Divinity
Psychology, Zoology	Geneva College	Higher Education
Religion	Jewish Hospital College of Nursing	Nursing
Sociology/Anthropology	Bentley College	Business
	The Pennsylvania State University	Child Clinical Psychology
Sociology/Anthropology, International Business	The Ohio State University	Nursing-Midwifery
Sociology/Anthropology, Psychology	The Ohio State University	Voice Performance
Sociology/Anthropology, Theatre	The Ohio State University	International Business
Spanish	Georgia State University	Osteopathic Medicine
Spanish, International Studies	Ohio University	Educational Administration/French Pedagogy
Spanish, Pre-Medicine	Kent State University	Law
Theatre	The Ohio State University	Hilberry Repertoire Company - Acting Program
	Wayne State University	Nursing-Midwifery
	The Ohio State University	Women's Studies
Theatre, Sociology/Anthropology	University of Cincinnati/University of Maryland	Management Sciences
Women's Studies, English	University of Maryland	Somatic Psychology - Dance/Movement Therapy
Women's Studies, Politics and Government	Naropa University	Optometry
Zoology	Pennsylvania College of Optometry	Genetics
	SUNY - Stony Brook	Medicine
	The Ohio State University	Veterinary Medicine
	The Ohio State University	Medicine
	University of Michigan	Environmental Sciences and Natural Resources
	University of Nevada - Reno	Pathobiology and Molecular Medicine
Zoology, Botany-Microbiology	University of Cincinnati	Medicine
Zoology, Pre-Medicine	Medical College of Ohio	Biomedical Research
	University of Florida	Physical Therapy
	Temple University	

GRADUATE SCHOOL BY AREA OF STUDY

<u>Area of Study</u>	<u>Graduate School</u>	<u>Degree</u>
Business	Ashland University	MBA
	Bentley College - McCallum Graduate School of Business	MBA
	Capital University	MBA
	Case Western Reserve University	MBA
	Case Western Reserve University	MBA
	Case Western Reserve University	MBA
	George Washington University	MBA
	George Washington University	MBA
	Georgia State University	MBA
	Otterbein College	MBA
	University of Maryland	MS
	University of Virginia	MBA
	Ashland University	MEEd
	Ashland University	MEEd
	California State University Long Beach	Teaching Credentials
	Eastern Connecticut State University	MA
	Geneva College	MA
Kent State University	MEEd & EdS	
Lesley University	MEEd	
Mary Grove College	MEEd	
Marygrove College	MA	
The Ohio State University	MMEd	
Ohio University	MEEd	
Otterbein College	MA	
Sacred Heart University	MAT	
Siena Heights University	MA	
Springfield College	MEEd	
University of Dayton	MA	
University of Pittsburgh	MAT	
University of Toledo	MA	
Norfolk State University	MA	
The Ohio State University	MM	
School of the Art Institute of Chicago	MFA	
Wayne State University	MFA	
Health Services	Jewish Hospital College of Nursing	ASN
	Johns Hopkins Bloomberg School of Public Health	MPH
	The Ohio State University	MS
	The Ohio State University	PhD
	Pennsylvania College of Optometry	OD

GRADUATE SCHOOL BY AREA OF STUDY

<u>Area of Study</u>	<u>Graduate School</u>	<u>Degree</u>
Health Services (continued)	St. Ambrose University	MPT & PhD
	Temple University	MPT
Humanities	Bowling Green State University/Boston University	MA & PhD
	University of South Florida	MA
Law	Boston College Law School	JD
	Capital University Law School	JD
	Case Western Reserve University School of Law	JD
	Harvard University Law School	JD
	The Ohio State University Moritz College of Law	JD
	University of Akron School of Law	JD
	University of California - Berkeley	JD
	University of Cincinnati	JD
	University of Maine School of Law	JD
	Yale University Law School	JD
	University of South Carolina	PhD
	University of Utah	PhD
	Case Western Reserve University School of Medicine	MD
Math/Physical Sciences	International Institute of Chinese Medicine	Doctor of Oriental Medicine
	Mayo Medical School	MD
	Medical College of Ohio	MD
	The Ohio State University	MD
	The Ohio State University	MD
	The Ohio State University College of Veterinary Medicine	DVM
	Ohio University College of Osteopathic Medicine	DO
	Ohio University College of Osteopathic Medicine	DO
	University of Florida	PhD
	University of Michigan	MD
	University of Vermont College of Medicine	MD
	Washington University in St. Louis	MD
	The Ohio State University	PhD
Natural Sciences	Ohio University	MA
	SUNY - Stony Brook	PhD
	University of Cincinnati	PhD
	University of Findlay	MS
	University of Florida	PhD
	University of Nevada - Reno	MS
	University of Vermont	MS
	University of Wisconsin - Madison	MS & MBA
	Washington University	PhD

GRADUATE SCHOOL BY AREA OF STUDY

<u>Area of Study</u>	<u>Graduate School</u>	<u>Degree</u>
Other, Computer Science	Rice University	PhD
Other, Culinary Arts	Scottsdale Culinary Institute	AOS
Other, Journalism	Ohio University	MS
Other, Women's Studies	University of Cincinnati/University of Maryland	PhD
Social Sciences	Kent State University	MEd & EdS
	Miami University	MA
	Naropa University	MA
	The Pennsylvania State University	PhD
	University of Connecticut	MA
	University of Illinois - Urbana-Champaign	PhD
	University of Pittsburgh	MA
Theology	Golden Gate Baptist Theological Seminary	MA
	Princeton Theological Seminary	MDiv

**APPENDIX:
CAREER SERVICES FIVE YEAR SURVEY
CLASS OF 1998**

Career Services Five Year Survey, Class of 1998

A. FACTUAL: Please answer the following questions. *(Print or Type Only)*

1. Name (at graduation) _____
2. Name (currently, if changed since graduation) _____
3. Home Address (street/city/state/zip) _____
4. Home Phone _____
5. E-mail _____
6. Cumulative GPA at OWU (circle): 2.0-2.49 2.5-2.99 3.0-3.49 3.5-4.0
7. OWU Major(s) _____ Minor(s) _____
8. Graduation Date (circle):
May 1998 December 1997 December 1998
9. What is your gender? (circle)
Male Female
10. What is your current status? (circle)
Employed Graduate Student Both Employed/Graduate Student
Other: Please Specify _____
11. What is the total number of paid positions you have held since graduation? _____
12. What is the total number of organizations you have worked for since graduation? _____
13. Would you be willing to serve as a "Career Mentor" (i.e.: talking with students about your career field) as part of the Volunteer Career Assistance Network? (circle) Yes No
14. If you would like us to share your current home contact information with Alumni Records, please check this box:

B. CURRENT EMPLOYMENT INFORMATION

1. Name of Organization _____
2. Job title: _____
3. Address of Organization (street/city/state/zip) _____
4. Work E-mail _____
5. Work Phone _____
6. Years in current position: _____
7. Employed: (please circle) Full-time Part-time

Please use the table below to answer questions 8 & 9. (Examples – If you are computer administrator at a hospital, your type of employer would be Health/Medicine and your type of position would be Computers/High Technology. A teacher at an elementary school would mark Education for both type of employer and type of position.)

8. Type of employer: _____
 9. Type of position: _____
- | | | |
|---------------------------|---------------------------|------------------------|
| Arts | Finance | Sciences |
| Business | Government | Social Services |
| Communications | Health/Medicine | Sports |
| Computers/High Technology | History/Museums/Libraries | Tourism |
| Education | International | Other (Please Specify) |
| Environmental | Law | |

OVER, PLEASE

10. Current Salary Range: (please circle)

- | | | | |
|-------------------|-------------------|-------------------|--|
| Under \$19,999 | \$30,000-\$39,999 | \$50,000-\$59,999 | \$70,000-\$79,999 |
| \$20,000-\$29,999 | \$40,000-\$49,999 | \$60,000-\$69,999 | Over \$80,000
(Please specify: _____) |

C. ADVANCED DEGREES

1. Have you completed an advanced degree? (please circle)

- No Yes (skip to #3) Currently Enrolled (skip to #3)

2. If you have not pursued an advanced degree to this point, do you plan to do so in the future? (please circle)

- No Yes

If you have completed your degree or are currently enrolled, please complete the following information:

3. Name of School _____

4. Name of Program _____

5. Year Degree Awarded/Expected: _____

6. Degree Sought: (circle)

- | | | | | | |
|------------------------------|-----|-----|-----|-----|------|
| MA | MS | MFA | MBA | MEd | MDiv |
| MSW | DDS | DVM | MD | JD | PhD |
| Other – Please Specify _____ | | | | | |

7. Area of Study: (circle)

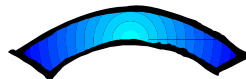
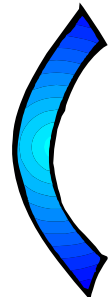
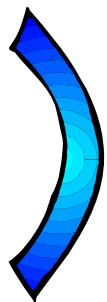
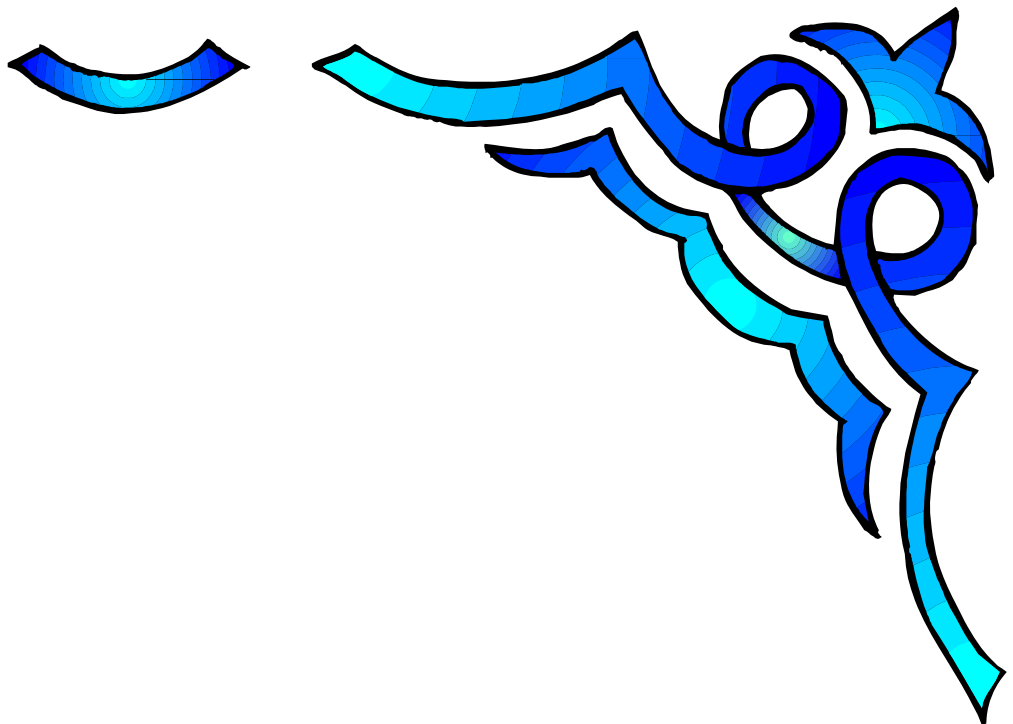
- | | | | |
|------------------|-----------------|-----------------------------|-----------------|
| Business | Fine Arts | Math/Physical Sciences | Social Sciences |
| Computer Science | Health Services | Medicine | Theology |
| Dentistry | Humanities | Natural Sciences | |
| Education | Law | Other (specify area: _____) | |

8. Why did you pursue graduate studies? (Please circle the one best answer.)

- | | |
|---|---------------------------------|
| Gain entry into field that requires advanced degree | Gain additional skills for work |
| Possible job/career change | Other (Please specify: _____) |

D. COMMENTS

We welcome any comments and suggestions which may be helpful to us in our work with students:



Career Services

“Connecting your Education to your Career Journey”

Ohio Wesleyan University

Delaware, Ohio 43015

740-368-3152

careers@owu.edu

<http://careers.owu.edu>